

County of Kankakee



Commuter Transit Feasibility Phase II Study

Task Force Meeting #8, December 11, 2007

Consultant Presentation (Rev 02)

Agenda

1. Current Project Overview
2. Progress on Existing Technical Tasks
 - 1.2: Socio-Economic & Ridership Data
 - 4.0: Capital Cost Estimate
 - 10.1: Final Report
3. Low Level Support Technical Tasks
 - 6.4: Institutional Issues
 - 8.3: Web Site Technical Support
4. Future Work
5. Discussion

Agenda

1. **Current Project Overview**
2. Progress on Existing Technical Tasks
 - 1.2: Socio-Economic & Ridership Data
 - 4.0: Capital Cost Estimate
 - 10.1: Final Report
3. Low Level Support Technical Tasks
 - 6.4: Institutional Issues
 - 8.3: Web Site Technical Support
4. Future Work
5. Discussion

Schedule

- Task Force Meetings:
 - #1, August 15
 - Project Overview
 - Start Initial Task Scoping
 - #2 & 3, Oct 17 and Dec 12
 - Detailed Task Scopings
 - #4 & 5, Feb 20 & Apr 17, 2007
 - Status of Tasks
 - #6 June 19, 2007
 - Draft Final Report
 - #7 August 21, 2007
 - Status of Issues Outside Control of Project
 - #8 December 11, 2007 (Last with ET)
 - Concluding Work
 - Final Final Report
 - Future Work
- Contractual term: Three Years (to July 20, 2009)

Task Order Status

Currently Concluding - Technical:

- 1.2 Socio-Economic and Ridership Forecasts
- 6.4 General Institutional Issues
- 8.3 Web Site Technical Support
- 10.1 Final Report

Currently Concluding – Managerial

- 9.1 Task Force Meetings
- 10.3 Project Management

Previously Completed

- 3.2 Transit Supportive Land Use
- 3.5 Independent Rail Alternative
- 8.1 PE/O Start-Up
- 8.2 & 8.4 PE/O Program
- 10.2 Initial Task Scoping

Agenda

1. Current Project Overview
2. Progress on Existing Technical Tasks
 - 1.2: Socio-Economic & Ridership Data
 - 3.5: Independent Rail Alternative (MOS Capital Cost Estimate)
 - 10.1: Final Report
3. Low Level Support Technical Tasks
 - 6.4: Institutional Issues
 - 8.3: Web Site Technical Support
4. Future Work
5. Discussion

Task 1.2 Socio-Economic & Ridership Forecasts

- Products Approved at February Task Force Meeting
 - Socio-Economic County-Wide Forecasts
 - Finalized Zone Geography
- Products Approved at April Task Force Meeting
 - Base Year Inventory and Approved/Planned Projects
 - Small-Area Forecasts
 - Increased K3 County 2030 population from 145k to 150k
- Since Last Task Force Meeting:
 - Status Meeting with CMAP (Sept 5)
 - Transmittal of Final Data Requested by CMAP (Sept 24)
- **CMAP Ridership Forecast Results**

CMAP Modeling Assumptions/Inputs

- South Suburban Airport is built
- Metra's STAR Line O'Hare-Hoffman Estates-Joliet-Sauk Village is built and has convenient transfer with MED in Matteson
- MED extended from University Park to North Peotone Road; Metra stations at Monee and Peotone
- KACOT service Kankakee (Exit 308) to Peotone; timed transfers with MED; 5 peak-period round trips
- Five KACOT stations, all with parking
- Kankakee population and employment forecasts approved by Task Force in April 2007

KACOT 2030 Ridership by Station

	Station	Mile Post	AM Peak Northbound		PM Peak Southbound		Total Daily Boardings	
			Ons	Offs	Ons	Offs		
MOS	FBO	So. Kankakee	59.0	100	—	—	100	100
		Kankakee	55.8	255	0	0	255	255
		Bradley	54.3	282	0	0	282	282
		Bourbonnais	50.8	1,971	0	0	1,971	1,971
		Manteno	46.5	1,621	0	0	1,621	1,621
		Peotone (MED transfers)	38.9	0	4,228	4,228	0	4,228
		Totals		4,228	4,228	4,228	4,228	8,455

KACOR-I vs. KACOT-II

Approach & Assumptions

■ KACOR-I

- Spreadsheet model using Census data
- Connects to MED at University Park
- 7 stations, including Monee & Peotone
- 5 peak period round trips per day

■ KACOT-II

- CMAP travel demand model
- Connects to MED at N. Peotone
- Five stations, not including Monee & Peotone
- 5 peak period round trips per day

KACOR-I vs. KACOT-II 2030 Ridership

	North End	Daily Boardings
KACOR-I	Univ. Park	4,400 to 6,600
	Peotone	2,600 to 4,200
KACOT-II	Peotone	8,500
Difference		+4,100 to +5,700

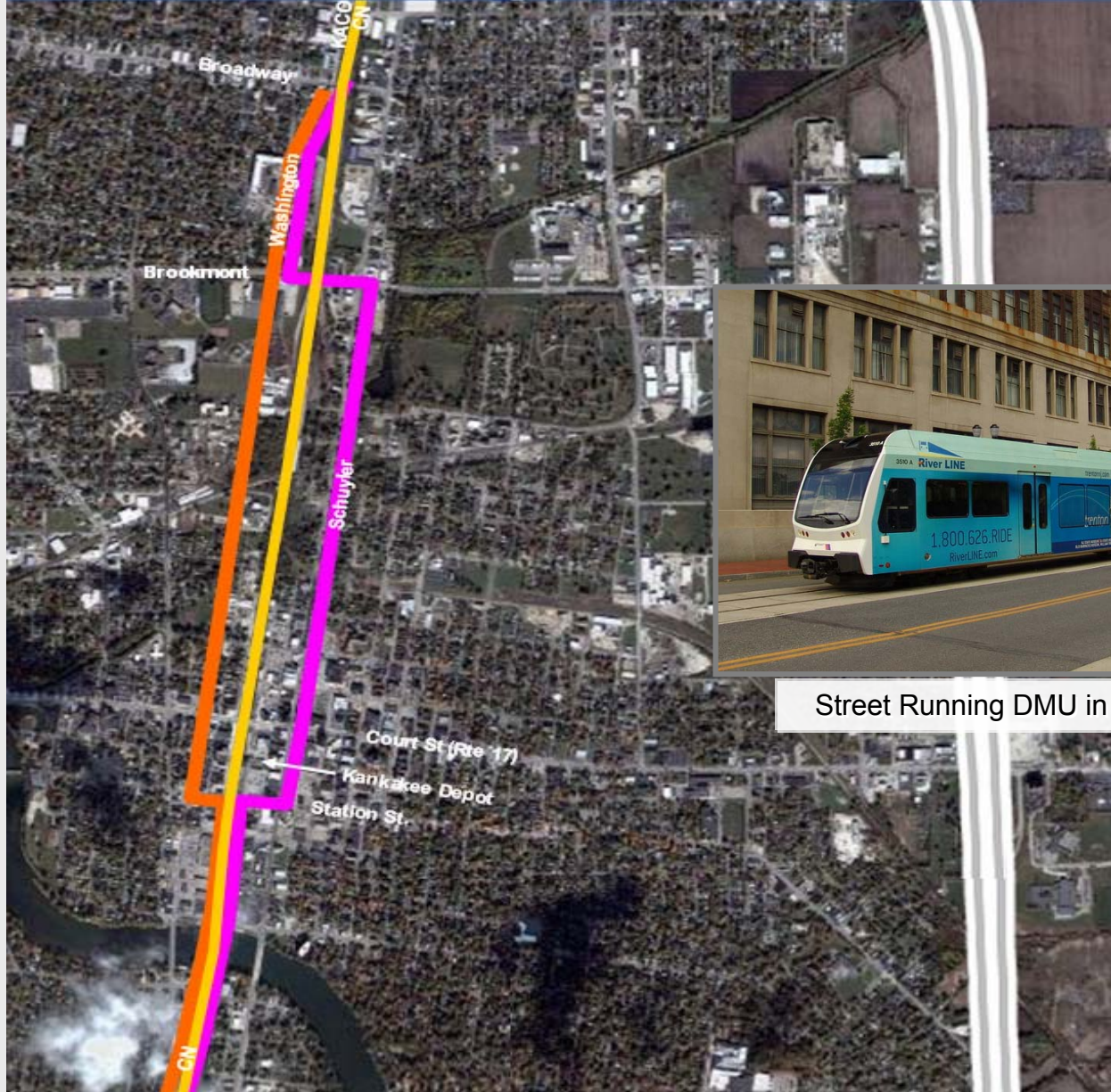
Task 4.0 MOS Capital Cost Estimate

Physical and Cost Comparison of Phase I and II Full Build Out Systems

			January 2005 Report	December 2007 Report	
End of Line Stations	North		University Park	N. Peotone Road	Different Ends of Line
	South	MOS	Manteno	Bradley	
		FBO	Exit 308	Exit 308	
Right of Way			Share CN Tracks	Purchase ROW Street Running	Purchase ROW Street Running
Central Control Facility			None (run by CN)	New CCF	Added Facility
Trackwork	Description		Improve CN (1 ½ > 2)	New Mainline (0 > 1½)	More trackwork
	Miles		28.0 miles	20.1 miles	Shorter Distance
New Stations (MOS / FBO)			3 / 7	3 / 5	FBO: Fewer Stations
Locomotives	Type		Diesel Multiple Units	Diesel Multiple Units	No Change
	Number		15	15	
Yard and Shop			New for DMUs	New for DMUs	No Change
Total Captial Costs (2004 \$)			MOS \$190.3 m		
			FBO \$298.5 m		
US Army Corps of Engineers Cost Index 08 (Roads, RRs & Bridges)			586.53 FY04	673.22 FY07	
Total Captial Costs (2007 \$)			MOS \$218.4 m	\$298.9 m	\$80.5 m
			FBO \$342.6 m		

MOS Cost Differences From Phase I

Increased MOS Cost (2007\$):	\$ 80.5 m
Totally New Items:	
▪ Central Control Facility:	\$ 2.2 m
▪ Railroad ROW:	\$ 7.2 m
▪ Fixed Percentages:	
• Professional Svcs (12 to 18%):	\$ 12.2 m
• Contingencies (20 to 30%):	<u>\$ 21.2 m</u>
Total:	\$ 42.8 m
Other Changes:	\$ 37.7 m
▪ New railroad (fill, bridges, culvert extensions, trackwork, signaling, road crossings, etc.)	
Totals from New KACOT Railroad:	\$ 47.1 m



Street Running DMU in New Jersey

Task 10.1 Final Report

- Draft Report
 - Distributed June 19 (Task Force Meet #6)
 - Incomplete sections:
 - Task 1.2 Ridership
 - Task 8.2 Public Education/Outreach
- Final Edition
 - Distributed today
 - Includes:
 - Review Comments Received
 - New Chapters 3 & 8 (above Tasks)
 - New Chapter 7 text on MOS Capital Cost Estimate
 - Updates to Other Chapters

Agenda

1. Current Project Overview
2. Progress on Existing Technical Tasks
 - 1.2: Socio-Economic & Ridership Data
 - 4.0: Capital Cost Estimate
 - 10.1: Final Report
3. **Low Level Support Technical Tasks**
 - 6.4: Institutional Issues
 - 8.3: Web Site Technical Support
4. Future Work
5. Discussion

6.4 Institutional Issues

- September 5 Amtrak Meeting
- September 14 RAC Meeting
- November 5 Intermodal Seminar

Task 8.3 Web Site Technical Support

- Statistics:

Statistic	Month			
	May-07	Jun-07	Jul-07	Oct-07
Unique Visitors	39	41	56	54
Number of Visits	58	67	66	65
Pages	273	318	148	151
Hits - Total	844	994	485	508
Googlebot Hits		28	59	63
% Changes:				
Unique visitors		5%	36%	-4%
Number of visits		16%	-2%	-2%
Pages		16%	-53%	2%
Hits-Total		18%	-51%	5%
Googlebot Hits		na	211%	7%

- Concluding Tasks:

- Added Presentation, Final Report, Executive Summary, Map
- Transfer Web site to Kankakee (start with CD today)

Agenda

1. Current Project Overview
2. Progress on Existing Technical Tasks
 - 1.2: Socio-Economic & Ridership Data
 - 4.0: Capital Cost Estimate
 - 10.1: Final Report
3. Low Level Support Technical Tasks
 - 6.4: Institutional Issues
 - 8.3: Web Site Technical Support
4. **Future Work**
5. Discussion

Future Work

- Metra Feasibility Study Process:
 - Happy Graduation!!
- FTA New Starts Process
 - Alternatives Analysis
 - ~ \$3-4 m
 - Local Match Required
 - 2 year project
 - June 2008 – Ask your congressperson

Future Work

- Interim Activities – Speakers:
 - Amtrak
 - Midwest High Speed Rail Association
 - FTA – New Starts Program
 - Rockford AA Experience
 - CREATE
 - SSA
 - Other?
- Earth Tech:
 - Contract is open until July 2009
 - Only a phone call away.

Agenda

1. Current Project Overview
2. Progress on Existing Technical Tasks
 - 1.2: Socio-Economic & Ridership Data
 - 4.0: Capital Cost Estimate
 - 10.1: Final Report
3. Low Level Support Technical Tasks
 - 6.4: Institutional Issues
 - 8.3: Web Site Technical Support
4. Future Work
5. Discussion



EarthTech

A ***tyco*** International Ltd. Company